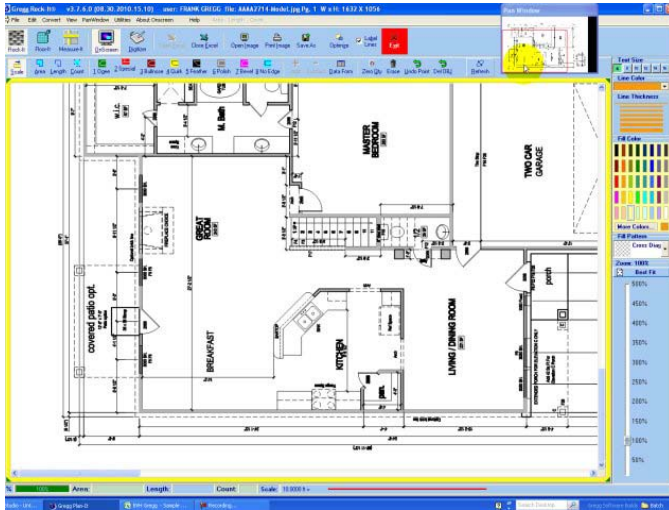


Gregg Software Incorporated

2601 Cartwright D219 Missouri city TX 77459 Ph# 713-854-4489 Web www.greggsoftware.com

Stone Fabricator for Counter Tops

with the “Slab Optimizer” and the “Trim Expert”



Gregg OnScreen is the most powerful digital measuring program to date for all contractors and subcontractors in ceramic tile, stone, marble, terrazzo, drywall, sheetrock, roofing, painting and carpet. Gregg Software focuses on full program integration where the measured items are automatically placed in the takeoff page of the pricing program. Draw images on the fly like countertops in kitchens or other items without plans. 4 measuring modes, “Area” (does area and perimeter as you go), “Length”, “Count”, and “Edge Work” (does area and edge lengths automatically. 7 standard edges to choose from per job with an unlimited number to enter

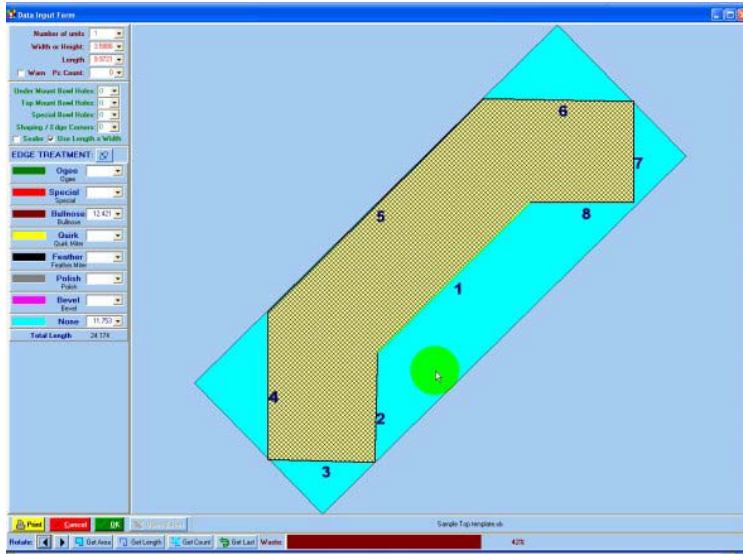
Gregg takeoff and drawings are color coded and marked with solid colors textures and edge work colors.



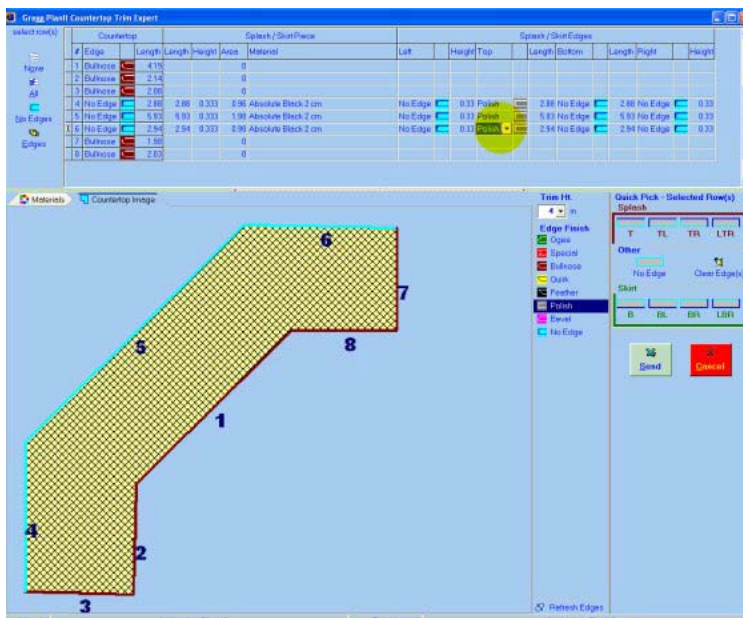
- Takeoff over a hundred kitchens a day and.....
- The Trim Expert will take off the splashes and skirts for you
- Know your waste factor with the slab layout optimizer
- Know your cash flow at estimate time for the business
- Create drawings at the site on the fly and the customers to sign off right then
- Save on estimating labor and office overhead paying for our program in days

Gregg Software Incorporated

2601 Cartwright D219 Missouri city TX 77459 Ph# 713-854-4489 Web www.greggsoftware.com



The data form shows the top and allows you to super impose a slab size over the piece with a vein direct choice you can make. It numbers the edges for the Trim Expert to choose the splashes and skirts. You place you bowl holes here with any other edge or custom work. You can edit the measured sizes in the event the sizes need to be extended.



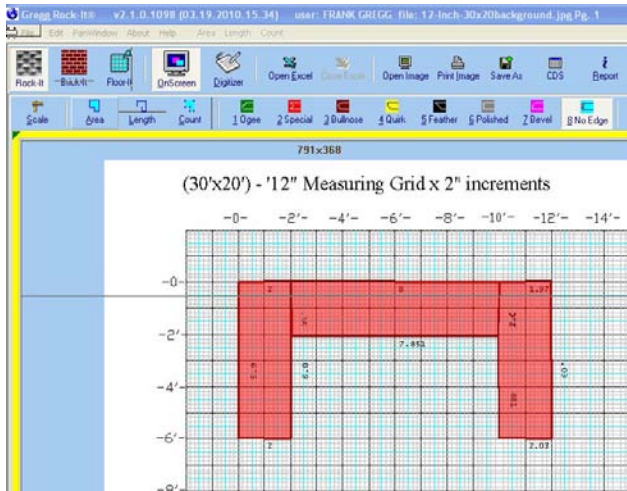
The Trim Expert is where you select the material type, Splash and Skirt height and edge type, and lengths.

The top is shown so you can select the correct sides for your extra items.

This form is so fast with extreme accuracy.

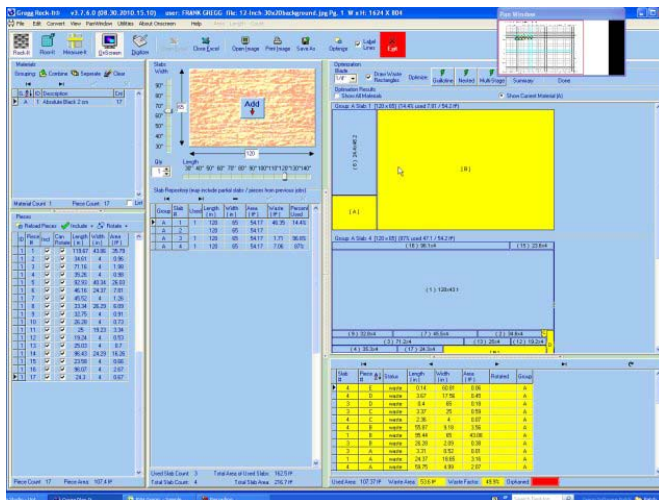
Gregg Software Incorporated

2601 Cartwright D219 Missouri city TX 77459 Ph# 713-854-4489 Web www.greggsoftware.com



Create drawings on the fly when there are no plans to go by.

Go to the job site and make your shop tickets for signing by the client in seconds.

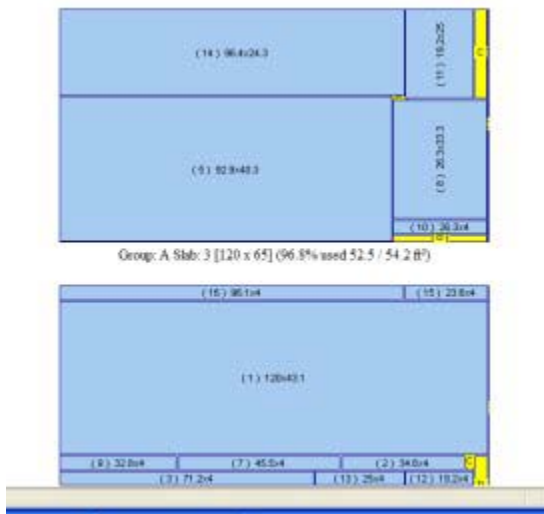


The Slab Optimizer will categorize and layout as many different types of materials as you use on the job.

Use your slab inventory sizes for the layout or the average slab sizes from the supplier. Y

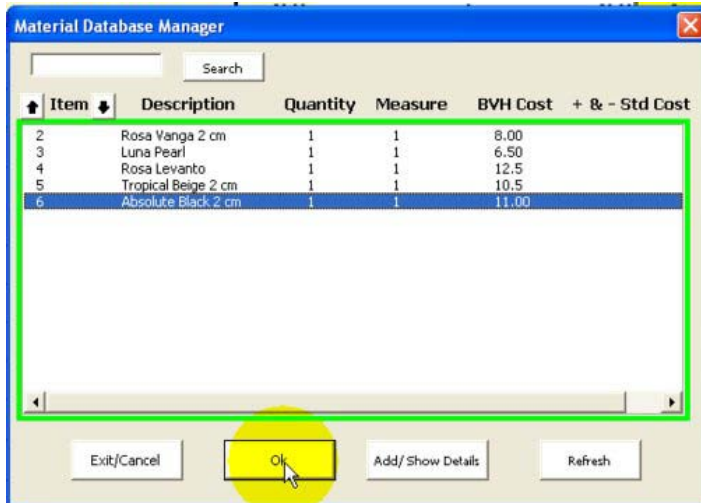
You get a layout with number of slabs needed and the factor to buy them with.

It does Guillotine, Nested and multistage layouts.



Gregg Software Incorporated

2601 Cartwright D219 Missouri city TX 77459 Ph# 713-854-4489 Web www.greggsoftware.com



Keep your most used materials with pricing in the Material Database.

Item	Price	Area or Linear Totals	Amount
Area #2 Edge/Bowl Holes	\$80.00	0	\$0.00
# of Top Mount Bowl Holes	\$80.00	0	\$0.00
# of Under Mount Bowl Holes	\$120.00	0	\$0.00
# of Double Bowl Holes	\$20.00	1	\$120.00
Sign	\$10.00	0	\$0.00
Special	\$10.00	0	\$0.00
Bulbcase	\$10.00	41	\$699.20
Quartz Wiper	\$8.00	0	\$0.00
Feather	\$20.00	0	\$0.00
Polax	\$6.00	46	\$271.70
Seal	\$0.00	0	\$0.00
Laminating/Consumers	\$20.00	0	\$0.00
Area #3 Freight, Duty Taxes, Ship Drawings, Containers + 2000 sq. ft. of above @ 50¢/sq. ft.	0.00	0	\$0.00
Rate per Container	\$1.160	0	\$0.00
Duty and Customs Charges	0.8%	0.00	\$0.00
Drinker and Truck Fee	\$200.00	0	\$200.00
Engineers Stamp	\$5.00	0	\$5.00
Tools/Equipment Total	\$0.00	Subtotal	\$0.00
Taxable Total	\$3,729.10	Subtotal of materials	\$3,729.10
Sales Tax	\$205.91		\$205.91
Other Cost	\$0.00		\$0.00
Total Material Cost	\$3,935.01		\$3,935.01

Area #2 Bowl Holes and edge Work stores the counts and cost:

- edge work and bowl holes
- waste factors
- saw operator time per job
- Saw blade and consumables
- templating

Item	Allocation	Area #1 Materials	Unit Cost	Total Cost
1	Y	Absolute Black 2 cm	\$11.00	\$11.00
2	Y	Absolute Black 2 cm	\$11.00	\$22.00
3	Y	Absolute Black 2 cm	\$11.00	\$33.00
4	Y	Absolute Black 2 cm	\$11.00	\$44.00
5	Y	Absolute Black 2 cm	\$11.00	\$55.00
6	Y	Absolute Black 2 cm	\$11.00	\$66.00
7	Y	Absolute Black 2 cm	\$11.00	\$77.00
8	Y	Absolute Black 2 cm	\$11.00	\$88.00

Area #1 Materials on the Bid Summary Page:

- Shows you the material totals for the project with unit values and line item totals Shows an accounting breakdown for managers
- Integrated with Timberline and soon to be Quick Books accounting programs

Gregg Software Incorporated

2601 Cartwright D219 Missouri city TX 77459 Ph# 713-854-4489 Web www.greggsoftware.com

The image shows a screenshot of a software-generated estimate form. The form is titled 'ESTIMATE' and includes the following information:

- Sample Company:** 2601 Cartwright D219 Missouri City, TX 77459 Ph# 713-854-4489
- Logo:** EHV Inc. (Estimating, Accounting, Billing, and Analysis)
- Customer Name/Address:** (Blank)
- Project Name:** (Blank)
- Date:** (Blank)
- Project Description:**

Material Selected	Quantity	Unit Cost	Total
Absolut Black 2 cm	107	\$56.47	\$6,042.29
- Other Cost:**

Price	Units	Total
\$0.00	0	\$0.00
\$0.00	0	\$0.00
\$0.00	0	\$0.00
\$0.00	0	\$0.00
\$0.00	0	\$0.00
\$0.00	0	\$0.00
- Sub Total:** \$6,042.29
- Grand Total:** \$6,042.29
- Deposit:** \$0.00
- Total Due:** \$6.00

Custom proposals can be built with all your company information and print out in an instant so you can close deals before the client leaves.